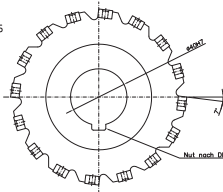
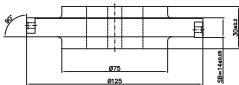


Aufnahme  $\varnothing 125$   
nach DIN 8031

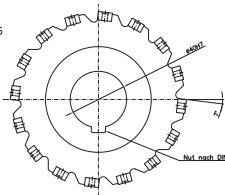


$Z_{\text{eff}}=8$

ohne IK



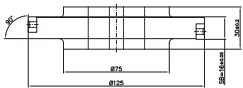
Aufnahme Ø125  
nach DIN 8031



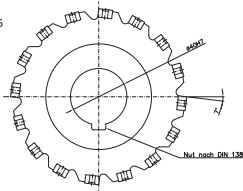
ZZeff=8

ohne IK

Nul nach DIN 138

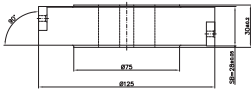


Aufnahme  $\varnothing 125$   
nach DIN 8031

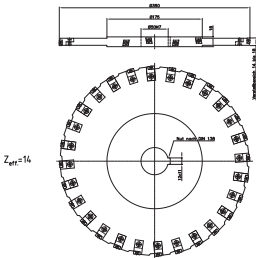


$Z_{\text{eff}}=8$

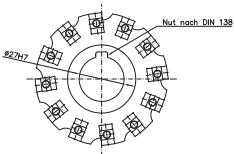
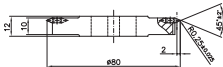
ohne IK



# Aufnahme nach DIN 8031



Aufnahme  
nach DIN 8031-80



Z=12

ohne IK